

# EAGLES EDITION



## Principal's Message

Hello Eagle Families,

There are just two weeks left of the first quarter. Please encourage your student(s) to attend office hours after school from 2:40 -3:10 PM Monday through Thursday. This is additional time created to support student success. If you have specific questions about your student(s) grades, I encourage you to contact their teachers.

Next week is Spirit Week! We love when our students participate and grow our school spirit.

**Monday~ Twin Day Tuesday~ Eagle Day Wednesday~ Career Day Thursday~ Sports Day**  
**Friday Class Colors: 7th-Green 8th-Blue 9th-Yellow 10th-Purple 11th-Red 12th-Pink**

Here are a few reminders:

- [Senior Fee](#) is due today - Friday, September 13, 2024.
- Please join us for our first of four Eagle Expos on Tuesday, September 17, 2024
- Jostens Senior Meeting is Friday, September 20, 2024 at **7:40am**. Parents are invited. You will learn more about ordering graduation announcements, cap and gown, etc.
- End of Quarter One: September 27, 2024
- Fall Break: September 30, 2024 - October 14, 2024
- Our Fall Festival is October 25, 2024 and we are looking for parents volunteers to be Class Basket Coordinators. For more information please read the PTO section of this newsletter.

Have a great weekend Eagles!

Warm Regards,  
Dr. Jennifer L.H. Murphy



# QUICK REFERENCES

## Page Jumps

**New Feature:**

**Click the topic you want and jump straight to that page**

**Calendar**

**Athletic Department**

**Basketball Student Gear**

**International Baccalaureate**

**PTO News**

**Fall Festival Tickets**

**Fall Festival Information**

**Fall Basket Coordinator**

**Fundraiser Opportunities**

**Quarter 2 Lunches**

**Eagle Expo**

**Kona Ice**

**Counselor Connection**

**University Events**

**EVIT**

**Senior Page**

**Health Office Notices**

**Free Vaccines**

## Helpful Links

[Gilbert's Parents  
Resource Page](#)



[7th-12th  
School Calendar](#)

[7th-12th  
Events Calendar](#)



[Friday A/B  
Schedule](#)

[7th-12th  
Bell Schedule](#)

[Website](#)

[Facebook](#)

[PTN  
Website](#)

[PTN  
Facebook](#)

# CALENDAR

## *This Month*

### SEPTEMBER

**16th-20th: Spirit Week**

**17th: Eagle Expo**

5-6:30 pm in the B4 gym

**20th: Jostens Senior Meeting**

At 7:40am in B3 Theater

**20th: Pep Rally**

**27th: Last Day of Quarter**

**9/20-10/28: Boo-Gram Pre-Sales**

hosted by StuCo

## *Next Month*

### OCTOBER

**9/30 - 10/14 No School**

Fall Break

**15th: First Day of Quarter 2**

**28th: PSAT**

For ALL Juniors at 7:30AM

[Back to Main Menu](#)

# ATHLETIC

# DEPARTMENT

Proud Sponsor of  
Eduprize athletics



## SPORTS INFORMATION 9/16 - 9/20

### JV Volleyball Schedule

**Monday:** Film Day 3:00 - 5:00  
in Coach Brandee's classroom (53)

**Tuesday:** AWAY Game @ James Madison - 4:30  
At Family Life Center Gym (157 S Center St)

**Wednesday:** Practice 3:00 - 5:30 - B3 Gym

**Thursday:** HOME Game Vs EVAC  
At 4:30 PM in B4 Gym

All game schedules can be found on  
[AZCAAPREPS.com](http://AZCAAPREPS.com)

**\*\*Athletic Payments need to be made on  
Infinite Campus by Monday  
or Athletes playing time will be affected\*\***

**\*\*There was a lack of interest in Jr High Girls'  
Flag Football or Jr High Boys' Volleyball, so we  
cannot offer them this year.\*\***

**Girls JR High Softball will have tryouts on  
September 24, 25, & 26 from 3:15 - 5:00 PM**

### Junior High A Schedule

**Monday:** HOME Game VS Legacy  
At 4 PM in B4

**Wednesday:** HOME Game Vs Basis  
At 4:45 PM in B4 Gym

**Thursday:** PRACTICE 3:00- 4:00 - B4 Gym

### Varsity Boys Flag Football Schedule

**Tuesday & Thursday:** Practice  
3:15 - 4:30 on Field

**Wednesday:** AWAY Game - at 4:30 & 5:30  
At Arizona Recreation Center for the Handicap  
(1550 W Colter St Phoenix AZ 85015)

### Junior High B Schedule

**Monday:** AWAY Game @ Tri City - 4:30PM  
(2211 W Germann Rd)

**Wednesday:** HOME Game VS Wells Middle  
School At 3:45 PM in B4

**Thursday:** HOME Game Vs San Tan Charter  
At 5:30 PM in B4

### COED JH Soccer Schedule

**Monday:** PRACTICE 3:15 - 4:30 on field

**Wednesday:** HOME Game Vs Basis  
At Red Mountain Sports Complex

**Thursday:** PRACTICE 3:15 - 4:30 on field

### Elementary Volleyball Schedule

**Monday:** PRACTICE 3:15 - 5:15 in B3

**Wednesday ~ AWAY Game @ Skyline Prep  
Academy (7450 S 40th St)  
Games at 4:30 & 5:30**

### JH Cheer Practice

**Tuesday & Thursday 3:00 - 5:00 - B3 Gym**

Be sure to bring water to your practices!  
Questions, please email the Athletic Director  
[Clint.ambos@eduprizeschools.net](mailto:Clint.ambos@eduprizeschools.net)

[Back to Main Menu](#)



# LIMITED EDITION BASKETBALL SHIRTS

BUY NOW AND SUPPORT YOUR  
SCHOOL BASKETBALL TEAMS

ALL PROCEEDS GO TO BUYING NEW EQUIPMENT AND UNIFORMS

SHIRTS WILL BE WORN ON “BLACK OUT” HOME GAMES



**BUY HERE**

[Back to Main Menu](#)



### **IB Registration**

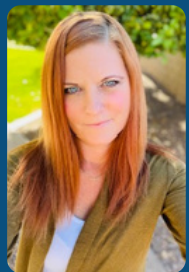
Starting next week, I will begin registering students for the May 2025 Exam session. Each exam is 123 (went up from 119). After I register students, I will provide them with a receipt and then the payment will be made through Infinite Campus. I'll share the payment instructions on the "All Things IB" Google Classroom page, so be sure to check that page for updates and new information. All exam payments are due by **Friday, October 18th**.

### **IB Day of Service**

First semester IB Day of Service will be Thursday, November 7th from 8-3. During this day, IB juniors and seniors will help around our campus with a variety of activities that teachers and administrators request. This is a great time for IB students to demonstrate their learner profile traits and to help out our school community. Stay tuned for more information and pictures of the fun day. These hours can also be used by our Diploma Candidates for CAS hours.

Have a good weekend,  
[amy.smith@eduprizeschools.net](mailto:amy.smith@eduprizeschools.net)

Amy Smith



**Amy Smith**  
IB Director



# PTO NEWSLETTER

AUGUST 2024

## PTO Calendar

[Click here to see volunteer opportunities and view the PTO calendar.](#)

## TEACHER & STAFF FAVORITES

[Click here to see the list!](#)  
[Can be used for bdays, holidays or appreciation](#)



## PTO NEWS

### LAST CHANCE!

Fall festival talent show auditions are next week! Mon-Wed Sept 16th, 17th and 18th from 3pm to 4pm. Sign up is required. Please see flyer for details or click [HERE!](#)

### We need your help!

Please consider volunteering with us to make Fall festival a success by signing up for a shift before, during or after the festival! This is our biggest event of the year and we so appreciate everyone helping in anyway they can!

Sign up [HERE!](#)

Teachers are also in need of classroom coordinators for their class raffle basket! Please see flyer [HERE](#) for all the details or ask your teacher how you can help!



## UPCOMING



-Fall fest talent show auditions  
September 16th-18th

-Eagle Expo grades 7-12 September 17th, stop by the PTO table for a treat/prize once you've finished the expo!

-Parkour Academy Fun +  
Fundraiser Event Friday, Sept 27th  
\$2 off for Eduprize families  
\*See flyer

The PTO will be presenting the K-6 student of the month with special rewards from Parkour Academy and Zoyo Neighborhood Yogurt.



## FALL FESTIVAL

When: Friday, October 25th 5-9pm

Where: Eduprize Gilbert, B3 Gate Entrance

**Tickets on Sale Now!**

**Click [HERE](#), or [See Flyer](#) for Details!**

Click [HERE](#) to volunteer at the festival. We need you!

Class Basket Coordinators Needed! Click [here](#) for Info



Don't have the time to volunteer or attend a fundraiser but want to make a monetary donation?

[Click Here](#)

We appreciate you!

## Follow Us

[Facebook](#) [Website](#)  
[PTO Facebook Group](#)

# GILBERT EDUPRIZE FALL FESTIVAL

FRIDAY, OCT 25TH 5-9PM

Eduprize Gilbert • 580 W Melody Ave • B3 Gate Entrance



## Tickets on Sale Now

**\$8 Online Pre-Sale**  
**\$10 at Door**

[Click Here to Buy Tickets on PTO Website](#)

or [Zelle pto@eduprizeschools.net](mailto:pto@eduprizeschools.net)

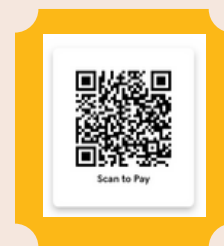
Must list full names for each wristband!

See details on information page or website

Immediate Families of 5 or more \$40 max online pre-sale

\*Eduprize enrolled Only, 2 & Under are Free

\*Teachers please see separate flyer



## ANNUAL BASKET RAFFLE

\$5/Ticket or 5/\$20

Pre-Sale Tickets on Website or [Click Here](#)

## HAUNTED HOUSE

Presented by Eduprize Basketball Boosters

\$2 Entry, Side of B3

Bounce Houses

Parkour Course

Petting Zoo

Live Reptiles

Talent Show

Spider Man and Elsa

Face Paint + Games

Pumpkin Contest [Enter Here](#)

Shopping + Fall Photos

Food Trucks

Principal + Teachers

Will Kiss the Pig

[Back to Main Menu](#)



# FALL FESTIVAL

## DETAILED INFORMATION

**Location: Eduprize Gilbert • 580 W Melody Ave • Gate 3 Entrance**

### **Admission Includes:**

**5 Bounce Houses, Parkour Academy Course, Petting Zoo, Live Reptiles, Fall Themed Games with Prizes, Corn Hole Games, Talent Show Entertainment, Music, Spider Man and Elsa, Face Painting, Balloon Animals, Board Games, Pumpkin Carving & Decocorating Contest, Fall Photo Areas, Dance Performance, See Admin+Teachers Kiss the Pig and more!**

### **The Extras:**

**Eduprize Annual Basket Raffle \$5 Raffle Tickets or 5 for \$20  
Basketball Boosters Haunted House \$2 • Food Trucks (Corn Dog Co, Sushi,  
Hawaiian Shaved Ice, Dole Whip, Cotton Candy, Waffle Love)  
Pizza and Snacks • Vendor Booth Shopping**

### **Ticket Prices:**

**Online pre-purchase price \$8 or \$10 at the festival. Pre-sale ends 10/23!  
Immediate families of 5 or more \$40 max pre-sale (Eduprize enrolled students only).  
Children under 2 are Free, Purchase tickets via Zelle with our NEW PTO email address  
pto@eduprizeschools.net or buy on our website. Please be sure to read details about  
pricing first before sending Zelle or purchasing tickets. You must list full names of each  
wristband you are purchasing. Failing to do so may void discounts /wristbands.  
Please have proof of purchase to pick up wristbands at door. Thank you!**

**-Talent Show Auditions Sept 16-18th, See Website or click [HERE](#)**

**-Vendor Spaces Available \$30 10x10 Space [Email PTO](#)**

**-Fall Festival Volunteers Needed & Recieve Free Entry/Discoutned Family Tickets**

**-Parent Volunteers Needed as Class Raffle Basket Coordinators [Click Here](#), FREE Raffle TICKETS**

**-Enter the Pumpkin carving or decoarting contest [HERE](#)**

**[pto@eduprizeschools.net](mailto:pto@eduprizeschools.net) [eduprizegilbertpto.com](http://eduprizegilbertpto.com)**

**[Back to Main Menu](#)**



# FALL FESTIVAL

## Basket Raffle



**Basket Coordinators Needed!**

*Fall Fest is October 25th, 5-9pm*

*Coordinators do not have to volunteer during the festival.*



### WHAT COORDINATORS DO:



- Come up with a basket theme (games, movie night or bigger)!
- Set up an email to all parents in class, let them know about basket and kindly ask for donations. A sign up genius can be made for physical items or you can ask for monetary donations. The raffle is an annual tradition.
- Ask if parents have a business that can donate (tax deductible) or if they know businesses who can donate items or make a monetary donation
- Check in with local businesses yourself. Get creative and look up ideas online!
- Keep in touch with the PTO to let us know what your class basket theme will be. We are here to help! Once we receive your information from your teacher, we will send you a helpful checklist with a tax donation receipt and donation request letter for anyone to use.
- Classes that have a basket are entered to win a pizza party with a movie or games!
- Receive free raffle tickets just for being a basket coordinator!

**BASKET COORDINATING INFO WILL BE SENT VIA EMAIL • PTO CAN ANSWER ANY QUESTIONS  
LET YOUR TEACHER KNOW RIGHT AWAY IF YOU ARE WILLING TO HELP YOUR CLASS!**



**EMAIL: [PTO@EDUPRIZESCHOOLS.NET](mailto:PTO@EDUPRIZESCHOOLS.NET)**

[Back to Main Menu](#)



# PTO September Fundraisers

## Fundraiser Info

Funds raised help make enrichments possible and our calendar of events happen!

Have a business or know one that would be willing to donate to the PTO? We are a non-profit and all donations are fully tax deductible. We appreciate your help and support!

Not into fundraising but want to help?  
Donate Here ↘

[Click Here to Donate](#)

Or Scan Here



Please create account online [HERE](#) to save time on signing a waiver!

# PARKOUR ACADEMY

FRIIDAY SEPTEMBER 27TH

12-3PM K-6 OR 6-9PM ALL/7TH + UP  
1830 E. BASELINE RD MESA 85204

\$2 OFF TICKETS FOR EDUPRIZE FAMILIES · 40% DONATED BACK

[Back to Main Menu](#)

# EDUPRIZE SCHOOLS

## 24-45 Q2 Lunch Menu



Prices and purchasing will be available on Infinite Campus  
starting 9/16/24

Online orders will close on 9/27/24 at 4:00 pm

### LUNCH START DATE WILL BE 10/15/24

**MONDAY**



**2 CHICKEN FINGERS W/ FRIES**

**TUESDAY**



**CHEESE PIZZA**

**WEDNESDAY**



**ORANGE CHICKEN BOWL**

**THURSDAY**



**BEAN AND CHEESE BURRITO  
W/ RICE**

The lunch program is for regular day students and AM TOPS STEAM program only!  
Hot lunch is NOT for PM TOPS. Lunches are purchased every quarter.

For questions please contact Tym at [tym.britton@eduprizeschools.net](mailto:tym.britton@eduprizeschools.net)

[Back to Main Menu](#)

# GO FOR THE GOLD



AND JOIN US FOR



# Eagle Expo

TUESDAY, SEPTEMBER 17TH

5:00-6:30 PM

BUILDING 4 GYM



FOOD TRUCKS!

FUN!

VIEW AMAZING  
PROJECTS!

EARN A GOLD MEDAL BY  
COLLECTING STAMPS!

**STUDENTS:**

**WIN THE GOLD FOR YOUR GRADE LEVEL**

7 VS 8 : GRADE WITH THE HIGHEST ATTENDANCE WINS A POPSICLE PARTY

HIGH SCHOOL: GRADE WITH THE HIGHEST ATTENDANCE WINS A POPSICLE PARTY

[Back to Main Menu](#)



# IS COMING!

Eduprize Schools-Gilbert Campus  
Eagle Expo

**TUESDAY, SEPTEMBER 17TH**  
**4:45-6:45PM**

**1**

**STEP 1: Choose Your Size**

\$4.00 Klassic, \$5.00 King, \$6.00 Color Changing, \$7.00 Collectable with \$3 Refills

**2**

**STEP 2: Choose Your Flavor**

Tiger's Blood, Blue Raspberry, Groovy Grape, Island Rush, Monster Mango, Lucky Lime, Watermelon Wave, Strawberry'd Treasure, Ninja Cherry, Piña Colada



**KONA ICE OF WEST CENTRAL CHANDLER**

480.840.4496 | [gaviles@kona-ice.com](mailto:gaviles@kona-ice.com) | [www.kona-ice.com](http://www.kona-ice.com)

Kona Ice® is the most unique, fun, creative & community driven experience in the country. Check us out. Seriously. Go to [www.kona-ice.com](http://www.kona-ice.com).



# COUNSELOR CONNECTION

Kendy Gonzalez B.S. in Psychology

“The need for connection and community is primal, as fundamental as the need for air, water, and food”

- Dean Ornish



[Back to Main Menu](#)

[480-813-9537 ex 3150](tel:480-813-9537)

[kendy.gonzalez@eduprizeschools.net](mailto:kendy.gonzalez@eduprizeschools.net)

## ACT

### Ready. Set. ACT!

Whether you're preparing for college, exploring college alternatives, or want to certify your career skills, ACT is here to help you every step of the way!

### The ACT Test is Evolving

### Free ACT Test Prep

### ACT WorkKeys

ACT® WorkKeys® is a system of assessments, curriculum and skills profiling that determine, build, and measure essential workplace skills that can affect your job performance and increase opportunities for career changes and advancement. Developed with the same knowledge and research expertise responsible for the ACT® test, WorkKeys assessments and training help lead individuals and businesses to success.

### 7 Unique College Majors You Never Knew Existed

### Student Blog Guidance for Whatever Future You're After Paying for College

### Social Emotional Learning (SEL)

**Social Emotional Skills Create Connections and Impact**  
Recent studies show that social and emotional skills like sustaining effort, getting along with others, maintaining composure, keeping an open mind, and social connection were shown to have a consistent and positive association with students' academic and career success.

27% of students who scored high in sustaining effort met ACT's STEM College Readiness Benchmark. Students who participate in social emotional skills programming have an 11% gain in achievement test scores.

## University information

### Rensselaer PolyTech Tour

### University of Advancing Technology

### NAU virtual tour

### U of A virtual tour

### GCU virtual tour

### University of Texas at El Paso virtual Tour

### Colleges of Distinction

Founded on the premise that there are hundreds of remarkable colleges across the United States, each with a unique strength to offer the next generation of college-bound students. We connect these colleges to curious, talented students.

## Scholarships

### Student Scholarship

### Arizona Community Foundation

### FLINN Foundation

### Click for a list of Full-Ride scholarship list

### QuestBridge

connects high-achieving students from low-income backgrounds with a thriving community and transformative educational, career, and life opportunities that help propel them to lives of fulfillment, meaning, and purpose.

### Tri-University Scholarship Resources

## Reminder

Your student's academic progress is available to you at your convenience through the Infinite Campus Parent Portal



### West Point Admissions Event

The United States Military Academy at West Point offers unique educational opportunities and leadership development.

How a West Point education can empower students to become leaders of character, equipped with the skills and values to excel in any field.

The application process and key factors for student success. The support is available to ensure students' academic and personal growth.

This is an excellent opportunity to learn more about West Point's commitment to academic excellence, character development, and service to our nation.

**18 September 2024 6:30 pm - 8:00 pm University of Arizona**

**19 September 2024 6:30 pm - 8:00 pm Arizona State University**



Join us for a momentous occasion as the University of Advancing Technology (UAT) proudly unveils its new Community Theater. The ribbon-cutting ceremony will take place on September 24th, from 4:00 PM to 5:00 PM, at UAT's campus.

This state-of-the-art theater, designed to inspire and support the creative talents of our community, marks a significant milestone in UAT's commitment to providing a dynamic space for classes, fairs, screenings, and events.

The event will feature:

- A formal ribbon-cutting ceremony
- Remarks from UAT staff, faculty and leadership
- A tour of the new theater facilities
- Light refreshments and networking opportunities

We invite students, faculty, staff, and community members to come together and celebrate this exciting addition to UAT. Don't miss this opportunity to be part of a new chapter in our university's history!"

**Reserve a Spot Here**

## GCU OPEN HOUSE

Grand Canyon University invites high school seniors and their parents or guardians to attend an upcoming East Valley Open House!

They can join us to learn more about GCU, including:

- Our campus and community
- The admissions process
- Financial aid and FASFA pointers

They'll even have an opportunity to enroll and lock in their scholarship offers.

**Register Here**

## NACAC National College Fair-

### Greater Phoenix

September 15, 2024

11:00am-3:00pm

**Register Here**

Ms. Kendy will be there

Get ready  
for a  
future you  
deserve!



Plan



Afford



Apply

Arizona's public universities, ASU, NAU and the Uof A are committed to keeping students throughout Arizona well informed about the incredible college-going opportunities available to you in your home state. As your in-state universities, we are excited to invite students and guests to a Tri-University Event near you! These sessions are geared toward providing you in-depth information about supports, campus life, how to apply, and finding your fit at an in-state university! Information presented will be the same at each location, so you only need to register for the program that works best for your schedule. We can't wait to host you at one of the following dates:

September 8 - September 19 - September 22 - September 26

**Register Here**

**Back to Main Menu**



INTRODUCING

The STEM  
Academy @

**evit**

 **BOEING** Honeywell

**Community Open House**

**Monday, September 16, 2024**

**5:30 - 7:00 PM**

**EVIT Power Campus**

**6625 S. Power Rd.**

**Mesa, AZ 85212**

*A new kind of STEM training,  
where educators and industry  
are fully engaged and equal  
partners in preparing students  
for high-tech jobs -- NOW.*

A partnership with Boeing, Honeywell, and Intel

Learn more: [evit.edu/stem](https://evit.edu/stem)

[Back to Main Menu](#)

# SENIORS

## CLASS OF 2025

**Sept 13, 2024**

**Senior fee is due**

**Pays for: Diploma, Diploma  
Cover, Stole and Cords,  
Senior Breakfast, Graduation  
Expenses**

**For question contact:  
[dixie.marshall@eduprizeschools.net](mailto:dixie.marshall@eduprizeschools.net)**

**College Admissions 101:  
Keep Calm and Ace Your  
Application Process .  
Wednesday, September  
18, 2024 – 6:00 p.m. CT  
Webinar**

**How to Find  
Your Path After  
High School**

**Your Guide to  
Senior Pictures**

**How to Write an  
Awesome College Essay.**

**Important Senior  
Dates**

# Health Office Updates



## IMPORTANT HEALTH OFFICE INFORMATION

As illness or health situations occur throughout the school year, it may be necessary for medication to be administered at school. All prescribed AND over the counter medication (i.e. Tylenol, Ibuprofen, Benadryl, etc.) will need to be checked into the Health Office, along with a [Prescription and Non-prescription Medication Consent](#) form which requires a doctor's signature. These forms can be found on our website [www.eduprizeschools.net](http://www.eduprizeschools.net) under the Parent & Student Resources>Health Office Forms, or you can just click on any of the links provided in light blue.

- **HEALTH ACTION PLAN:** Please be aware that children who have asthma, diabetes, or seizures will need an action plan provided by their health care provider, **ALONG** with the signed [Prescription and Non-prescription Medication Consent](#) form .
- **ASTHMA:** If your child has asthma, an asthma action plan will need to be provided by your doctor **ALONG** with a signed [Prescription and Non-prescription Medication Consent](#) form .
- **ALLERGIES:** Allergies that require an EpiPen will need an [Anaphylaxis Management Packet](#) filled out and signed by a doctor along with the [Prescription and Non-prescription Medication Consent](#) form .
- **MEDICATION:** As a reminder, **ALL** medications need to be checked in at the Health Office. Students are not allowed to carry any medication in their backpack unless the parent and Dr have signed a self carry medication consent in addition to the medication consent form. A [Prescription and Non-prescription Medication Consent](#) form will also need to be filled out for any medications, prescription or non prescription.

We cannot accept ANY medications without these forms.

Any questions can be directed to the Health Office staff at (480) 813-9537 option 7

## Medication Authorization

If you would like your student to be able to access medication at school, please complete the authorization [FORM](#) and return to the health office.



[Back to Main Menu](#)

(IF AVAILABLE)

**COVID -19  
FLU**

**ADULT VACCINES 19+**

**HEPATITIS A  
HEPATITIS B  
TDAP (TETANUS)  
MMR**

*(Limited supply)*

*Please bring all your vaccine records*



**VACCINES AT NO COST TO YOU**

**ST. VINCENT DE PAUL SCHOOL**  
 3130 N. 51ST. AVE.  
 PHOENIX, AZ 85031  
**WEDNESDAY,**  
**SEPTEMBER 4, 11, 18 & 25**  
 2:00 P.M. - 5:30 P.M.

**CENTRO COMUNITARIO**  
**SALUD EN BALANCE**  
 2801 N. 31 ST.  
 PHOENIX, AZ 85008  
**THURSDAY, SEPTEMBER 5**  
 2:00 P.M. - 5:00 P.M.

**WEST VALLEY FOOD BANK**  
 7205 N 51ST AVE.  
 GLENDALE, AZ 85301  
**MONDAY, SEPTEMBER 9**  
 10:00 A.M. - 2:00 P.M.

**TOLLESON CIVIC CENTER**  
 9055 W. VAN BUREN ST.  
 TOLLESON, AZ 85353  
**TUESDAY, SEPTEMBER 10**  
 1:00 P.M. - 5:30 P.M.

**ESCALANTE**  
**COMMUNITY CENTER**  
 2150 E. ORANGE ST.  
 TEMPE, AZ 85281  
**TUESDAY, SEPTEMBER 10**  
 2:00 P.M. - 5:00 P.M.

**MESA LIBRARY**  
 64 E. 1 ST.  
 MESA, AZ 85201  
**TUESDAY, SEPTEMBER 17**  
 2:00 P.M. - 5:00 P.M.

**MURPHY EDUCATION &**  
**HEALTH CENTER**  
 3140 W. BUCKEYE RD.  
 PHOENIX, AZ 85009  
**TUESDAY, SEPTEMBER 17**  
 2:00 P.M. - 5:00 P.M.

**CROSIER VILLAGE**  
 717 E. SOUTHERN AVE.  
 PHOENIX, AZ 85040  
**THURSDAY, SEPTEMBER 19**  
 2:00 P.M. - 5:00 P.M.

**GILA BEND LIBRARY**  
 777 E. LOGAN AVE.  
 GILA BEND, AZ 85337  
**MONDAY, SEPTEMBER 23**  
 11:00 A.M. - 3:00 P.M.

**ONE SMALL STEP**  
 710 N. COOPER RD.  
 GILBERT AZ. 85233  
**TUESDAY, SEPTEMBER 24**  
 9:00 A.M. - 12:00 P.M.

**ST. MATTHEW**  
**CATHOLIC SCHOOL**  
 320 N. 20TH DR.  
 PHOENIX, AZ 85009  
**TUESDAY, SEPTEMBER 24**  
 2:00 P.M. - 5:30 P.M.

**CESAR CHAVEZ**  
**COMMUNITY CENTER**  
 7858 S. 35th AVE.  
 LAVEEN VILLAGE, AZ 85339  
**THURSDAY, SEPTEMBER 26**  
 1:00 P.M. - 5:00 P.M.

**STARS HEALTH FAIR**  
 2502 E. WASHINGTON ST.  
 PHOENIX, AZ 85034  
**FRIDAY, SEPTEMBER 27**  
 8:00 A.M. - 1:00 P.M.

Immunization Equity Program

For questions about vaccines call the

**CARES Center at 602 506-6767**

Children need consent from a parent or legal guardian to get vaccinated.

Bring your insurance information, those without insurance are still welcome. Maricopa County Public Health is committed to providing universal access to all of our events. Please contact us to request disability accommodations. Advance notice is necessary to arrange for some accessibility needs.

*(if you have Medicare we can ONLY do COVID & Flu if available)*

[Back to Main Menu](#)



**NOW HIRING**  
**SUBSTITUTES**

**We offer:**

Competitive pay - \$20.75/hour (teacher certified)  
\$19.50/hour (sub certified)  
\$17/hour (no certification)

Flexible Schedules - Traditional day and AM/PM TOPS

Range of Classes - Grades PreK-12th grade and specialty classes like dance, PE, computers, and much more.

Incredible Community - Our staff, students, and parents are a welcoming and loving community you will enjoy being apart of.

**IF INTERESTED PLEASE EMAIL**

[emily.yeaman@eduprizeschools.net](mailto:emily.yeaman@eduprizeschools.net)



**WE'RE HIRING!!**

**COME AND JOIN OUR AIDE STAFF !**  
LOOKING FOR HARD WORKING PEOPLE WHO LOVE SAFETY AND WORKING WITH KIDS!



**TIMES NEEDED ARE:**

7:00-8:05 A.M.

10:20 A.M.-1:10 P.M.

2:30-3:40 P.M.

-GREAT FOR STAY AT HOME PARENTS, RETIREES AND COLLEGE STUDENTS OVER 21 YEARS OR OLDER.

- WE ARE VERY FLEXIBLE WITH SCHEDULES.

- FRIENDLY ENVIRONMENT

**JOB TYPE: PART-TIME 19HRS A WEEK**

**IF INTERESTED PLEASE CONTACT:**

**TYM BRITTON**

**AIDE SUPERVISOR**

**CAR LANE COORDINATOR**

**LUNCH PROGRAM COORDINATOR**

**EDUPRIZE GILBERT**

**PHONE: (480) 813-9537 EXT.1270**

**EMAIL: TYM.BRITTON@EDUPRIZESCHOOLS.NET**

**Back to Main Menu**