

# EAGLES EDITION



## Principal's Message



Robin Yeargain

Dear EDUPRIZE Parents,

As always, I love being the principal of EDUPRIZE! I love the students, the families, and my incredible teachers and staff, who give their ALL every day! Teaching is a profession of the heart, and I'm in awe of all that my staff does here because they genuinely care. One thing we talk about daily is called a growth mindset. A growth mindset describes people who believe their success depends on time and effort. People with a growth mindset feel their skills and intelligence can be improved with effort and persistence. They approach challenges with enthusiasm, persist through obstacles, learn from constructive feedback, and find motivation in the success of others. Those with a growth mindset believe they can get better at something through dedication and practice. The most important components are working on one's flaws and the process—not the outcome. With patience and commitment, they trust they can accomplish their goals. The opposite of a growth mindset is a fixed mindset, which assumes abilities and intelligence are unchangeable traits. Research shows that parents can powerfully impact their child's mindsets. The language you use and the actions you take show your children what you expect. Giving praise to process, accepting mistakes as learning opportunities, and understanding the role of emotions in learning all lead to a growth mindset instead of a fixed one. Here are a few suggestions on how to foster that growth mindset by choosing words carefully when praising your children:

1. **Praise the Process:** Focus on effort, strategies, and persistence rather than just the outcome. For example, instead of saying, "You're so smart," try, "I'm so proud of how hard you worked on this!"
2. **Encourage Learning from Mistakes:** Teach your child that mistakes are an opportunity to learn and grow. Share examples from your own life where mistakes helped you improve.
3. **Use the Power of "Yet":** When your child says, "I can't do this," remind them to add the word "yet." This reinforces the idea that abilities develop over time with practice.
4. **Model a Growth Mindset:** Share your own challenges and how you're working to overcome them. Demonstrating that learning is a lifelong process helps children adopt the same attitude.
5. **Celebrate Effort and Progress:** Recognize even small steps of improvement to help your child see that their hard work pays off.

Thank you for partnering with us in your child's education and growth. Together, we're building a community of lifelong learners.

Have a great 3 day weekend!

Kindly,

Robin



# QUICK REFERENCES

## Page Jumps

New Feature:  
Click the topic you want and  
jump straight to that page

**Calendar**  **New**

**MLK Day Camp**

**New**  **Eduprize Dance Team**

**Battle of the Books**

**Project Exploration**

**PTO News**

**PTO Sponsorship Opportunity**

**Athletic Department**

**Elementary Yearbooks**

**Health Office Notices**

**Job Opportunities**

## Helpful Links

[Gilbert's Parents  
Resource Page](#)



[K-6th Regular  
Day Calendar](#)

[K-6th TOPS  
Day Calendar](#)



[K-6th Events  
Calendar](#)

[Website](#)

[Facebook](#)

[PTO  
Website](#)

[PTO  
Facebook](#)

# CALENDAR

## Next Month

### FEBRUARY

3rd: Project Exploration Chaperone Meeting

5:00pm B2 Rm. 59

10th-14th: Conference Week

Grades K-6th

13th: Early Release

K-6 regular day students only

13th: Board Meeting

1:00pm B1 Media Center

14th: Student Council Meeting

12:00pm-1:00pm B2 Rm. 54

14th: Project Exploration Departure

1:00pm B3 Gym

17th: No School

Presidents Day Holiday

18th: Campus Tour

5:00pm in B3 Theater

26th: Elementary Spring Pictures

Pre-K - 6th grade students

**\*Must pay for a package ahead of time**

27th: Kindergarten Roundup

4:30pm-6:00pm B1 Lobby

28th: Student Council Meeting

12:00pm-1:00pm B2 Rm. 54

[Back to Main Menu](#)

## This Month

### JANUARY

20th: No School

MLK Holiday



20th: MLK Day Camp at Eduprize

8am-12pm

24th: SignUpGenius goes live

K-6 conferences

27th: Campus Tour

5:00pm in B3 Theater

31st: Student Council Meeting,

12:00pm-1:00pm B2 Rm. 54



# SCHOOLS OUT

**BUT WE'RE IN!**

**MLK Half day Open Gym / Camp  
Jan 20, 8am-12:pm @ B4**

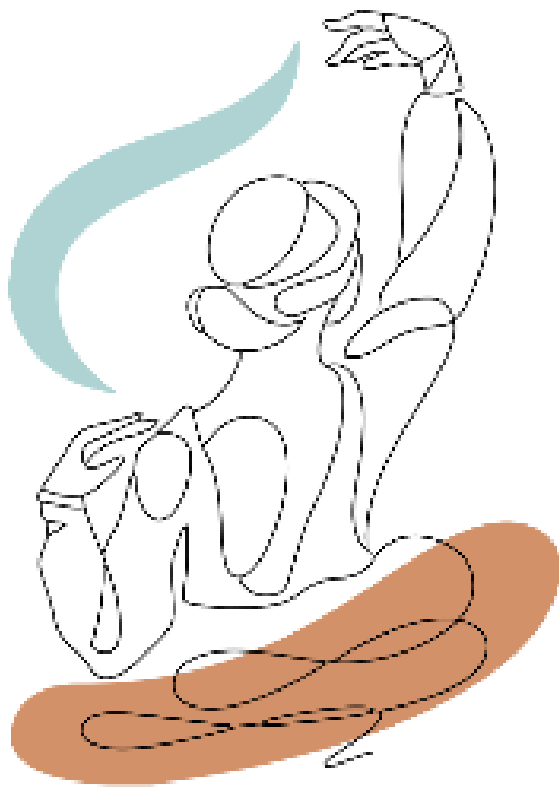
1st Child \$25, 2nd Child \$20, Each additional Child \$10  
(Children must be siblings in the same household)

To Register or For More Information,  
Email: [eduprizebasketball@gmail.com](mailto:eduprizebasketball@gmail.com)

Activities include; supervised open gym,  
table games & craft

Snack included

**HOSTED BY EDUPRIZE BASKETBALL**



# EDUPRIZE DANCE TEAM 2025 Q3&Q4

**SIGN-UP  
HERE**

- Every Thursday from 3:00-4:00 PM
  - January 23-May 22nd
- 3rd-6th graders only
- Available for AM TOPS, and Regular day!
- Students will learn basic dance skills and dance terminology
- Perform at the assembly
- 20 spots open
- The club fee of \$70 will include a t-shirt to wear to practice and the performance!

*If you have any questions contact Coach Sydney  
[sydney.stegall@eduprizeschools.net](mailto:sydney.stegall@eduprizeschools.net)*

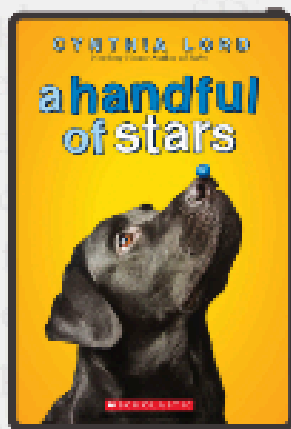
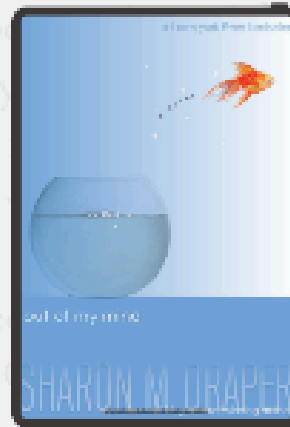
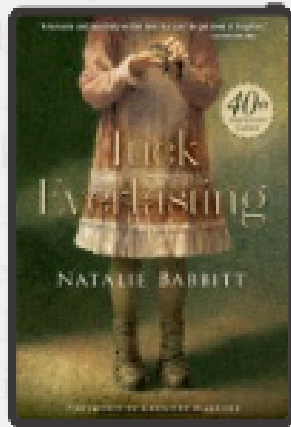
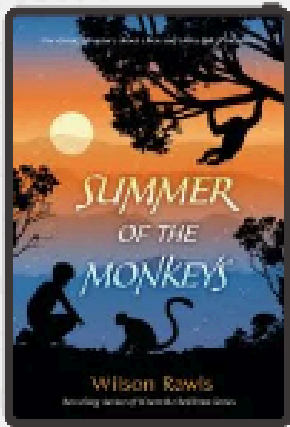


## BATTLE OF THE BOOKS- BATTLE #2

APRIL 23, 2025

3:45, MEDIA CENTER

# ARE YOU READY TO BATTLE?!



[Back to Main Menu](#)

CREATE YOUR TEAMS NOW!!!

TEACHERS WILL BE SENT A GOOGLE FORM TO INPUT TEAMS ON MONDAY, JANUARY 20TH.

15 TEAMS WILL BE CHOSEN TO COMPETE ON WEDNESDAY, JANUARY 22!  
TEAMS MAY THEN STOP BY RM 52 AND PICK UP BATTLE BAGS. FIRST COME, FIRST SERVED AND BOOKS ARE LIMITED.

**Fine print: Teams not chosen last round will be given 1st choice at competing this round and are automatically chosen as part of the 15.**

# PROJECT EXPLORATION: UNIVERSAL CAREER BUILDER

FEBRUARY 14-16, 2025



## COUNTDOWN TO PROJECT X: 28 DAYS

### TO DO:

- SUBMIT STUDENT MEDICAL, DIETARY, T-SHIRT INFORMATION PAST DUE
- JOIN CLASS DOJO TO GET TRIP UPDATES (INCLUDING PHOTOS). AN INVITATION WAS SENT TO YOUR EMAIL FROM MS. BOYD ON 1/9/25.

[Back to Main Menu](#)





## PTO NEWS

The Elementary and JR High sweethearts dance is finally back and will be on held Friday, February 7th in the B3 gym! Tickets will be very limited for elementary due to space. Tickets will be available starting this Tuesday evening the 21st at 5pm. Please look for an email and or text with link to ticket leap to purchase tickets or check our website. Please be sure to review all details on ticket leap before purchasing tickets.

We are looking for volunteers to help decorate and chaperone! Please help us make this dance a success by volunteering [HERE!](#)

## PTO Calendar

[Click here to see volunteer opportunities and view the PTO calendar.](#)

## TEACHER & STAFF FAVORITES

[Click here to see the list!](#)

[Can be used for bdays, holidays or appreciation](#)

## UPCOMING



-Elementary and Jr High Sweethearts Dance Friday, February 7th (Elementary must purchase tickets early to attend)

-Collecting t-shirt size info for the fun run/color run in March. Please be sure to get teachers that info so your child has a shirt!

-Possible Peter Piper Pizza Fundraiser Night

## PTO Website

All budget info, fundraisers and much more will always be available on our website. Updated info will be added from Nov/December soon.

[www.edupizegilbertpto.com](http://www.edupizegilbertpto.com)

Email: [PTO@EDUPRIZESCHOOLS.NET](mailto:PTO@EDUPRIZESCHOOLS.NET)



Don't have the time to volunteer or attend a fundraiser but want to make a monetary donation?

[Click Here](#)

We appreciate you!

## Follow Us

[Facebook](#) [Website](#)

[PTO Facebook Group](#)





## SPONSORSHIP OPPORTUNITY



We are in need of sponsors to help pay for students fun run shirts. Your name or business logo would be on the back of every child's t-shirt or t-shirt sleeve. Please email us if you'd be willing sponsor. Tiers ranging from \$250-\$3,000. Thank you!

# 2025 FUN RUN

Powered by Booster

Advertise your business with us during the school fun run!

Tax Deductible

**DUE BY**  
**JANUARY 22ND**  
**2025**



Email Us:  
[PTO@eduprizeschools.net](mailto:PTO@eduprizeschools.net)

\*All businesses who sponsor will also be featured in the school newsletter and on social media.

# SEL CORNER

## (SOCIAL AND EMOTIONAL LEARNING)

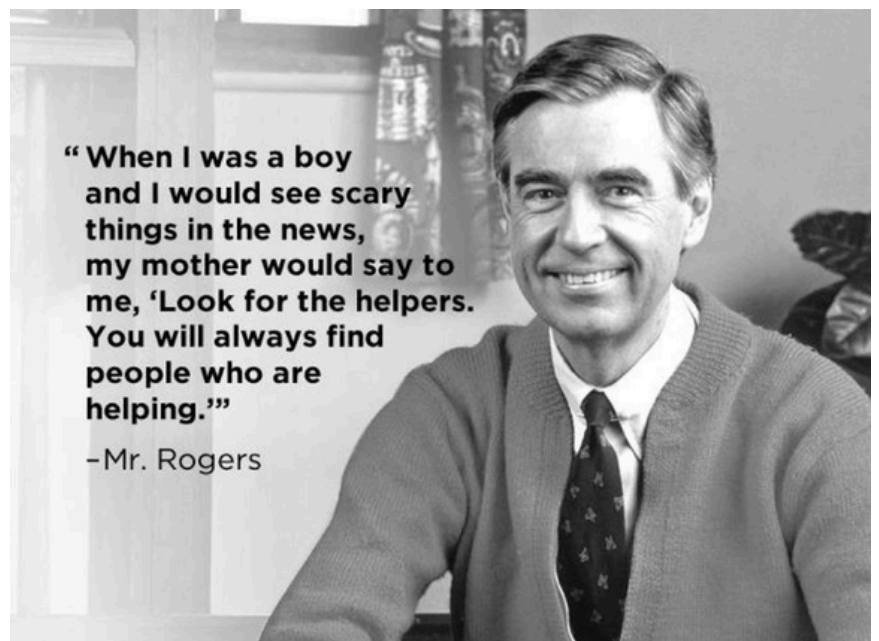
Dear EDUPRIZE families,

In light of the Palisades fire in Los Angeles, California, I wanted to take some time to talk about community. In times of tragedy, we can often see the best come out in others. If you would like to be a helper (as mentioned in the Mr. Rogers quote below) in this time of need, here are some official Amazon Wish Lists that were created by the staff of 2 schools that have burned down recently.

- Marquez Elementary
  - [Art Amazon Wish List](#)
  - [Science Amazon Wish List](#)
  - [Grade level Amazon Wish List 1](#)
  - [Grade level Amazon Wish List 2](#)
- Palisades High School
  - [MATH Classes Amazon Wish List](#)
  - [English Classes Amazon Wish List](#)
  - [Art Classes Amazon Wish List](#)



**Heather Vehon**  
Dean of Students K-6th



Sincerely,  
Heather Vehon  
Dean of Students  
Eduprize Schools  
Gilbert Campus  
[heather.vehon@eduprizeschools.net](mailto:heather.vehon@eduprizeschools.net)

# ATHLETIC

# DEPARTMENT

Proud Sponsor of  
Eduprize athletics



## SPORTS INFORMATION WEEK OF 1/21-1/24

All game schedules can be found on [AZCAAPREPS.com](http://AZCAAPREPS.com)

24-25 Athletic [FORMS](#)

24-25 Athletic Physical [FORMS](#)

**\*\*HS Girls Flag Football Info Meeting will be held on Monday, January 27 from 3-3:45. Tryouts will begin the following day and the rest of the week.**

**\*\* HS Boys Volleyball will start tryouts on JANUARY 29th in the B4 Gym**

**\*\* We are also starting a Fellowship of Christian Athletes (FCA) on Thursday January, 23rd at 3 PM in the B4 Gym. It is open to any student that would like to attend.**

### JV Boys Basketball

**Practice: Wednesday**  
5:00-6:30 in B4 Gym

**Practice: Tuesday & Thursday**  
5:00-6:30 in B3 Gym

### Jr High Girls Basketball

**Practice: Wednesday - 3:00 - 4:45**

**Tuesday: HOME vs Champion Schools**  
4:30 - B4 Gym

**Thursday: HOME Vs Legacy North**  
5:30 - B4 Gym

### Varsity/Open Basketball

**Check with Coach Ashton**  
**for Practice Schedule**

**Tuesday: OPEN HOME VS Premier Prep**  
7PM - B4 Gym

**Wednesday: OPEN AWAY at PHH at 5:30pm**  
(4600 E Cotton Gin Loop)

**Thursday~ Varsity AWAY @ Premier Prep at 7pm**  
(4600 E Cotton Gin Loop)

### Cornhole Schedule

**Practice: Tuesday - Thursday**  
from 3:00 - 4:00 PM  
B4 Stage

**Saturday (1/25): At Brighton High School**  
(Glendale)

Van will leave Eduprize at 8:15  
The tournament will start at 10

### JH Cheer Practice

**Practice: Tuesday from 3:00 - 5:00**

Be sure to bring water to your practices!  
Questions, please email the Athletic Director  
[Clint.ambos@eduprizeschools.net](mailto:Clint.ambos@eduprizeschools.net)

[Back to Main Menu](#)



# Eduprize Gilbert (PreK-6)

**STAY CONNECTED** AND DON'T MISS OUT  
ON YOUR **2024-2025 YEARBOOK!**



TO ORDER VISIT:

[Buytheyearbook.com](https://buytheyearbook.com)

Enter School ID #724709  
to find your school faster!

Only \$35 until March 8, 2025!

**Back to Main Menu**

*Dorian*

# Health Office Updates



## IMPORTANT HEALTH OFFICE INFORMATION

As illness or health situations occur throughout the school year, it may be necessary for medication to be administered at school. All prescribed AND over the counter medication (i.e. Tylenol, Ibuprofen, Benadryl, etc.) will need to be checked into the Health Office, along with a [Prescription and Non-prescription Medication Consent](#) form which requires a doctor's signature. These forms can be found on our website [www.eduprizeschools.net](http://www.eduprizeschools.net) under the Parent & Student Resources>Health Office Forms, or you can just click on any of the links provided in light blue.

- **HEALTH ACTION PLAN:** Please be aware that children who have asthma, diabetes, or seizures will need an action plan provided by their health care provider, ALONG with the signed [Prescription and Non-prescription Medication Consent](#) form .
- **ASTHMA:** If your child has asthma, an asthma action plan will need to be provided by your doctor ALONG with a signed [Prescription and Non-prescription Medication Consent](#) form .
- **ALLERGIES:** Allergies that require an EpiPen will need an [Anaphylaxis Management Packet](#) filled out and signed by a doctor along with the [Prescription and Non-prescription Medication Consent](#) form .
- **MEDICATION:** As a reminder, ALL medications need to be checked in at the Health Office. Students are not allowed to carry any medication in their backpack unless the parent and Dr have signed a self carry medication consent in addition to the medication consent form. A [Prescription and Non-prescription Medication Consent](#) form will also need to be filled out for any medications, prescription or non prescription.

We cannot accept ANY medications without these forms.

Any questions can be directed to the Health Office staff at (480) 813-9537 option 7

Please review our [school health guidelines](#) to ensure you are aware of policies around kids are sick.

## Medication Authorization

If you would like your student to be able to access medication at school, please complete the authorization [FORM](#) and return to the health office.



[Back to Main Menu](#)

**NOW HIRING**  
**SUBSTITUTES**

**We offer:**

Competitive pay - \$20.75/hour (teacher certified)  
\$19.50/hour (sub certified)  
\$17/hour (no certification)

Flexible Schedules - Traditional day and AM/PM TOPS

Range of Classes - Grades PreK-12th grade and specialty classes like dance, PE, computers, and much more.

Incredible Community - Our staff, students, and parents are a welcoming and loving community you will enjoy being apart of.

**IF INTERESTED PLEASE EMAIL**

[emily.yeamen@eduprizeschools.net](mailto:emily.yeamen@eduprizeschools.net)

**WE'RE HIRING!!**

**COME AND JOIN OUR AIDE STAFF!**  
LOOKING FOR HARD WORKING PEOPLE WHO LOVE SAFETY AND WORKING WITH KIDS!



**TIMES NEEDED ARE:**

7:00-8:05 A.M.

10:20 A.M.-1:10 P.M.

2:30-3:40 P.M.

-GREAT FOR STAY AT HOME PARENTS, RETIREES AND COLLEGE STUDENTS OVER 21 YEARS OR OLDER.

- WE ARE VERY FLEXIBLE WITH SCHEDULES.

- FRIENDLY ENVIRONMENT

**JOB TYPE: PART-TIME 19HRS A WEEK**

**IF INTERESTED PLEASE CONTACT:**

**TYM BRITTON**

**AIDE SUPERVISOR**

**CAR LANE COORDINATOR**

**LUNCH PROGRAM COORDINATOR**

**EDUPRIZE GILBERT**

**PHONE: (480) 813-9537 EXT.1270**

**EMAIL: TYM.BRITTON@EDUPRIZESCHOOLS.NET**

[Back to Main Menu](#)





### **Website**

Our webpage contains important information such as parent notices, dates of our Board meetings and budgets, and important ECA programs and tax credit information.

### **Resumés**

Resumé information for all instructional staff is available in the administration office.

### **Free and Reduced Lunch/Every Student Succeeds Act**

EDUPRIZE does not participate in the official National School Lunch Program. A reduction of 10% is offered to parents who meet the Federal Income Guidelines at the Gilbert campus. Applications are available at the Front Desk of all buildings.

### **Board of Directors Meeting**

Board of Directors meetings are generally held every month and the date, location and times are posted on our website. Meeting agenda is posted on the business bulletin board on site and on line on the school website.

<https://www.eduprizeschools.net/board-2/>

### **Equal Employment/Enrollment Opportunities**

EDUPRIZE provides equal opportunity to all employees and enrolled students and is not biased regarding race, gender, ethnicity, religion, national origin, language proficiency or disability.

### **Open Enrollment**

EDUPRIZE ensures that it complies with all open enrollment requirements per state law. EDUPRIZE uses a lottery system for filling openings and no tuition is required.

### **Political Activities**

EDUPRIZE ensures that it does not use its forum or student base to promote any political activities or position

### **EL Information**

Arizona is a very diverse state with many different cultures and languages. EDUPRIZE is no different, we have about 100 students that have a language other than English within the home. The languages represented include Spanish, German, Russian, Serbian, French, Arabic, Urdu, Korean and Cantonese, to name a few.

Any student that has another language, either spoken at home or by the student, must take a proficiency exam in English. Students who do not test proficient in English are called ELs, or English Learners. These students qualify for extra help during the day to improve English fluency. EDUPRIZE uses 2 different models of instruction, both include SEI (Structured English Immersion) endorsed teachers using English Language Proficiency (ELP) standards. In K-6th grade, we have a 2 hour SEI model, where students remain in their classroom and the teacher uses SEI strategies to increase English language proficiency.

This model will focus on Reading, Writing, Listening, Speaking and Grammar standards that are incorporated within the classroom instruction and small group lessons. In the 7-12th grades, students are in a pull-out program with an SEI endorsed teacher that provides 50 minutes of focused English instruction to EL students. Both programs use ELD (English Language Development) as well as ELP standards that tie the English language objectives to content instruction. Students are monitored in their English fluency progression each quarter and then are reassessed in Quarter 3 through a state test called the AZELLA-Arizona English Language Learner Assessment. As always, EDUPRIZE teachers do a remarkable job on helping our ELs increase their English proficiency each year.

